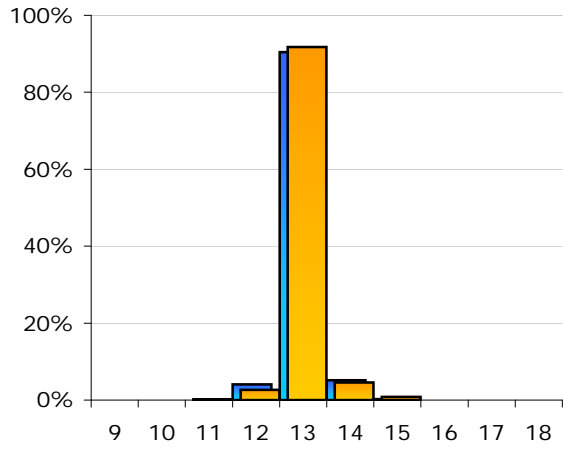
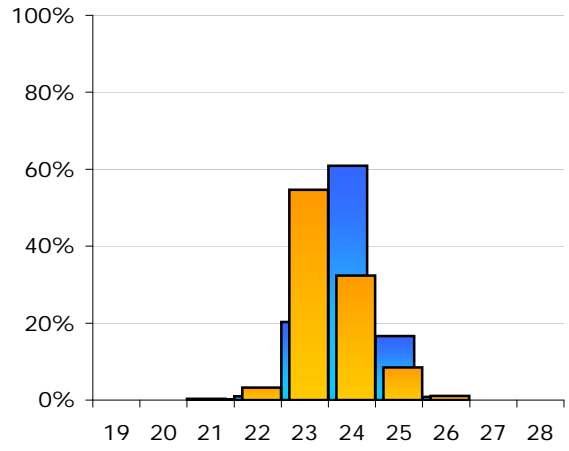


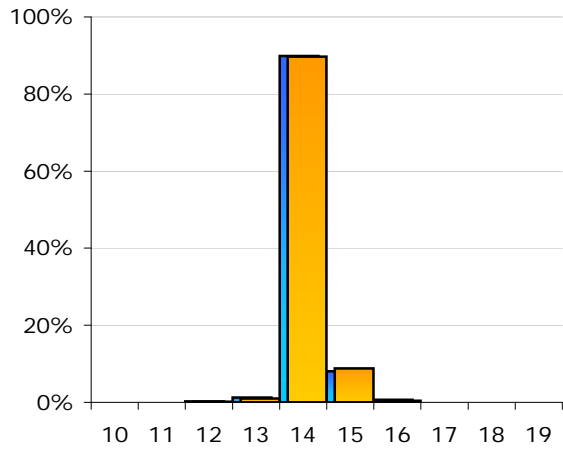
**DYS393**



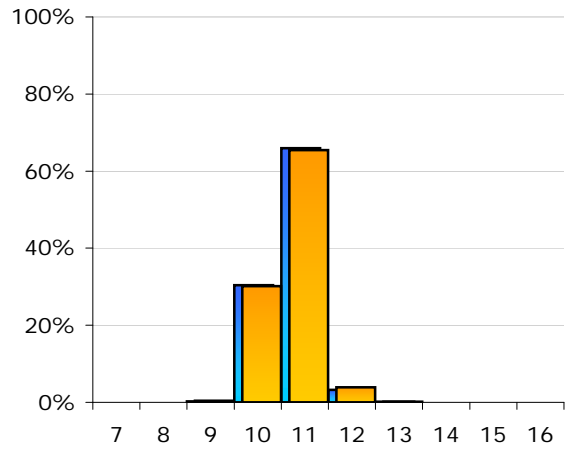
**DYS390**



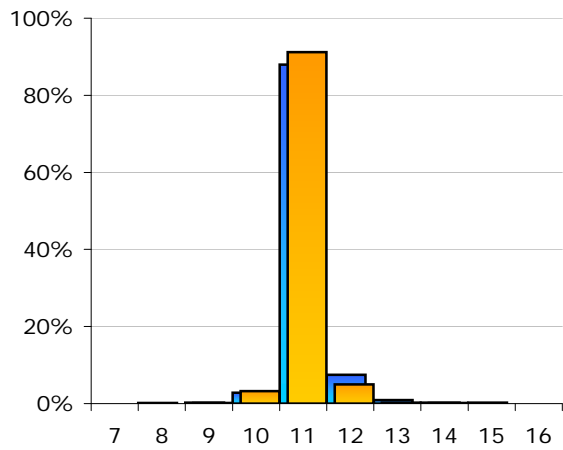
**DYS19**



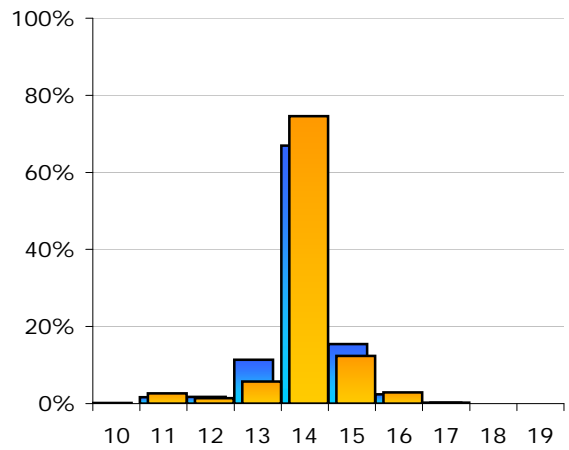
**DYS391**



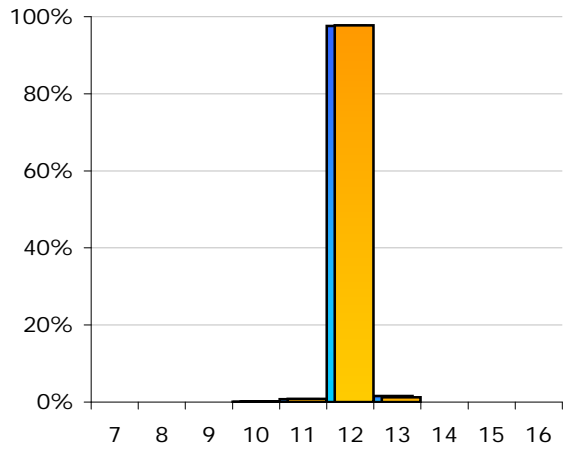
**DYS385a**



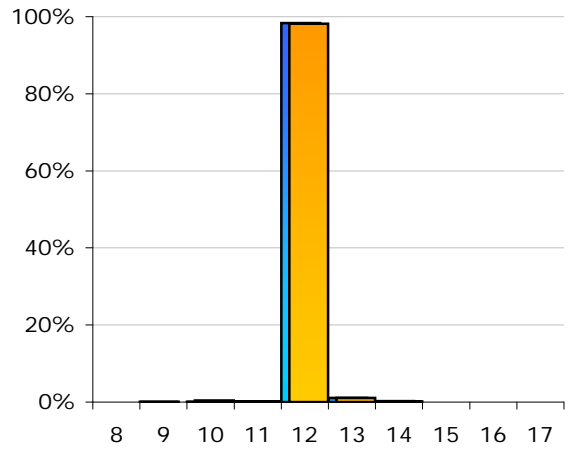
**DYS385b**



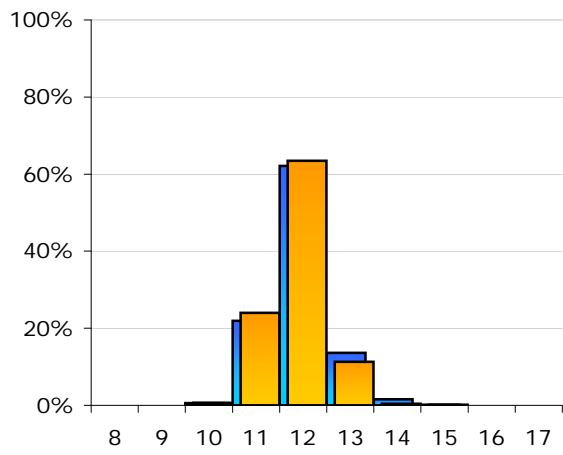
**DYS426**



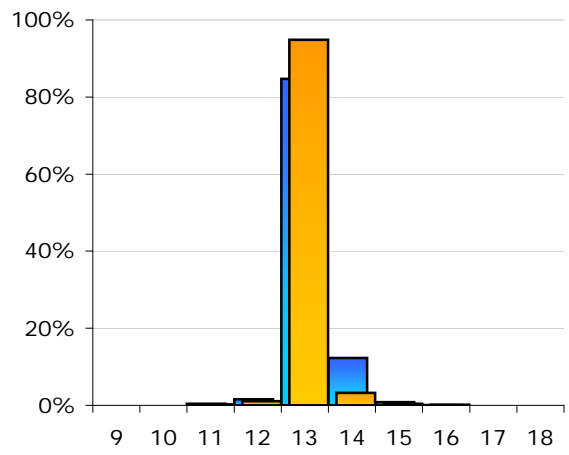
**DYS388**



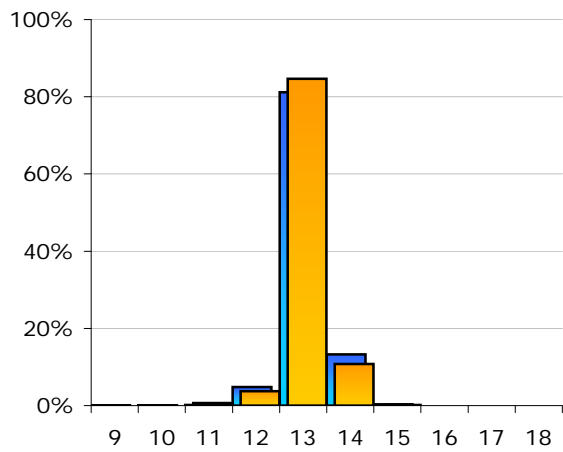
**DYS439**



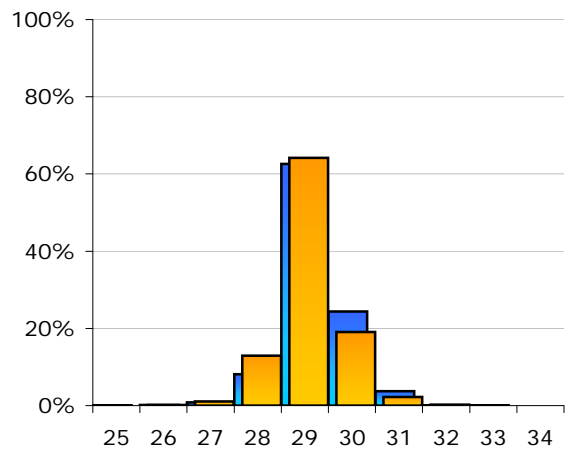
**DYS392**



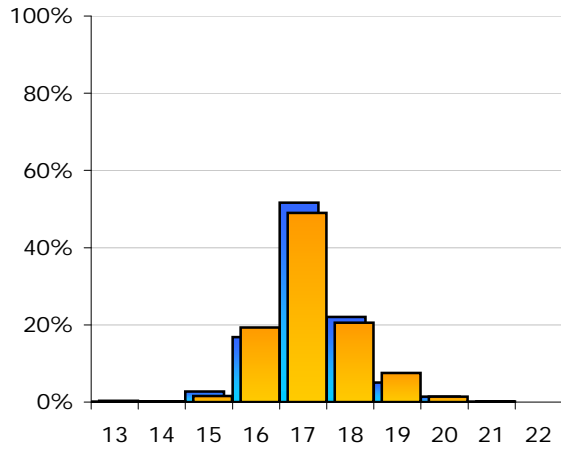
**DYS389-1**



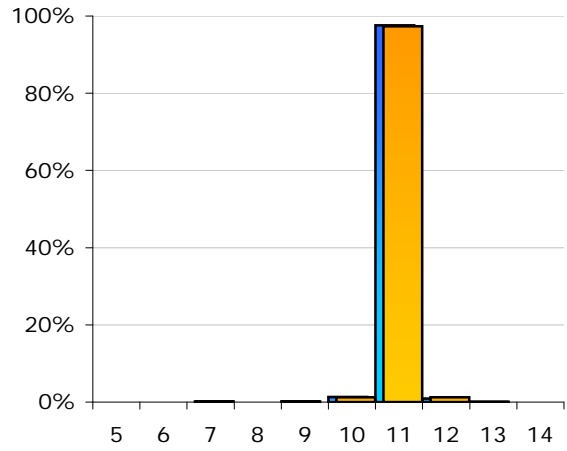
**DYS389-2**



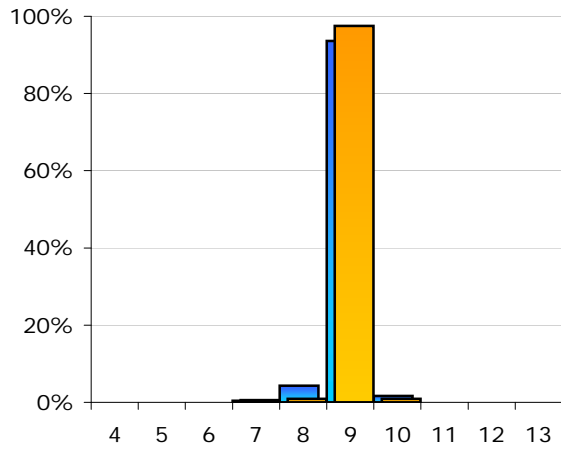
**DYS458**



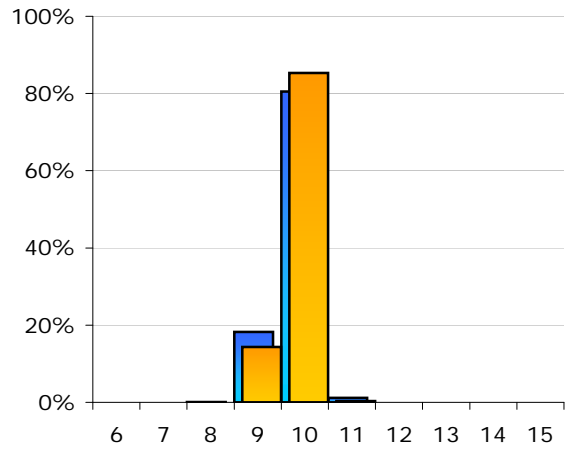
**DYS455**



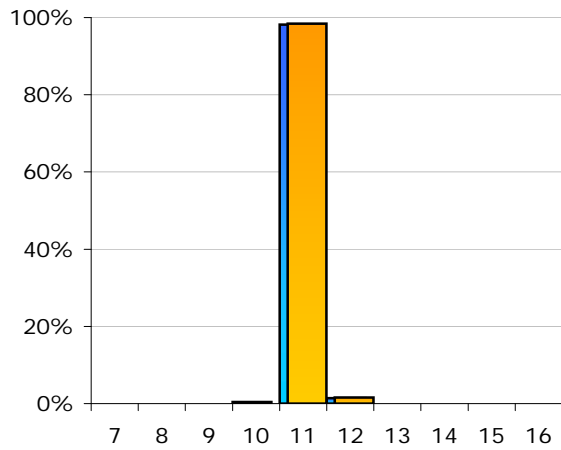
**DYS459a**



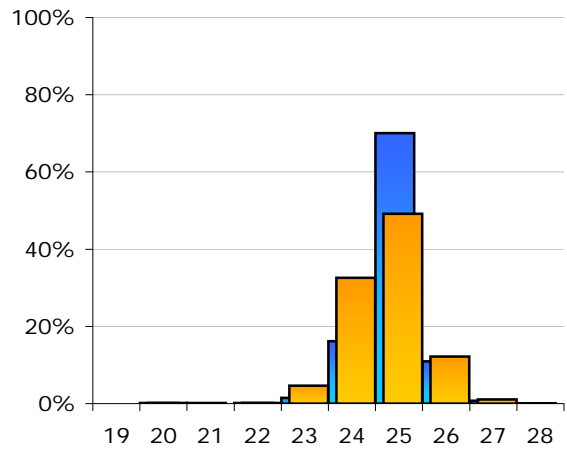
**DYS459b**



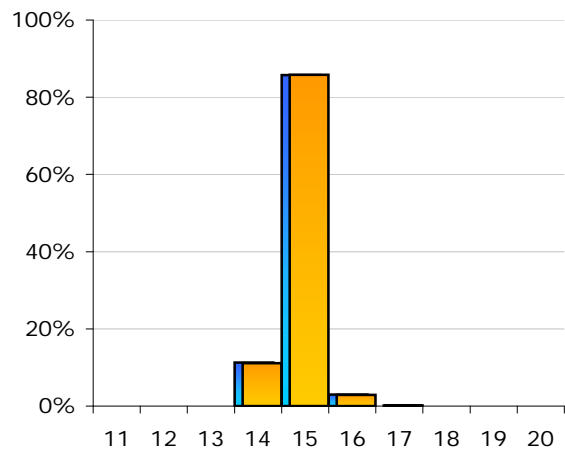
**DYS454**



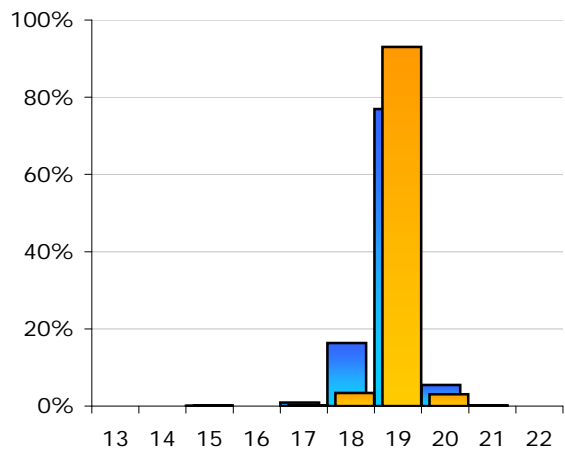
**DYS447**



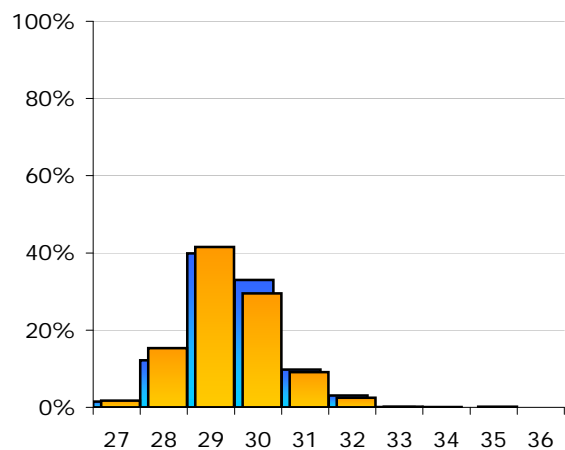
**DYS437**



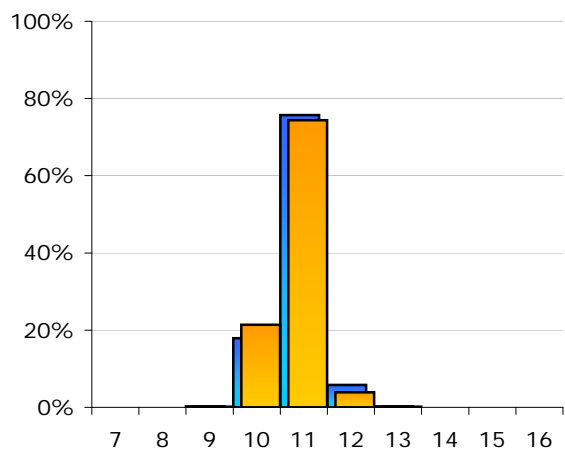
**DYS448**



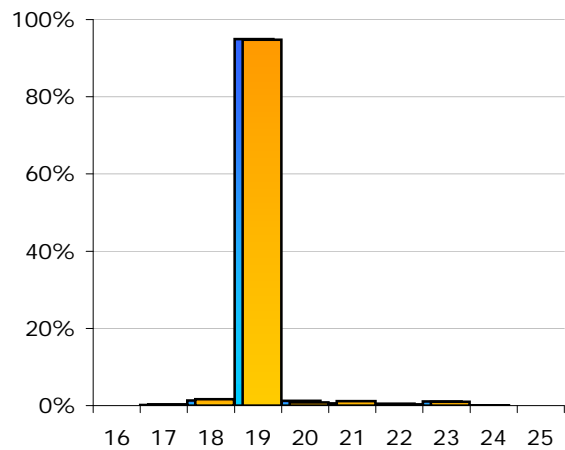
**DYS449**



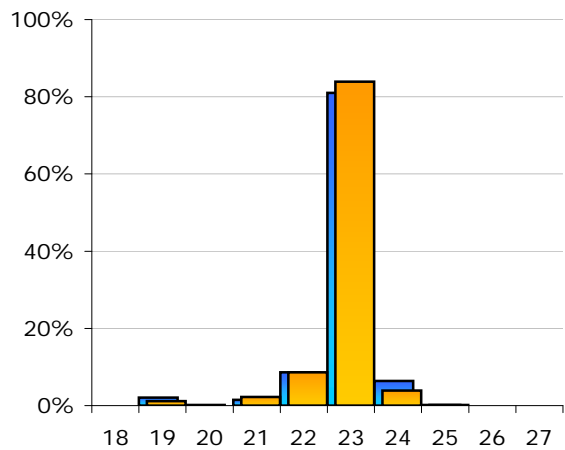
**DYS460**



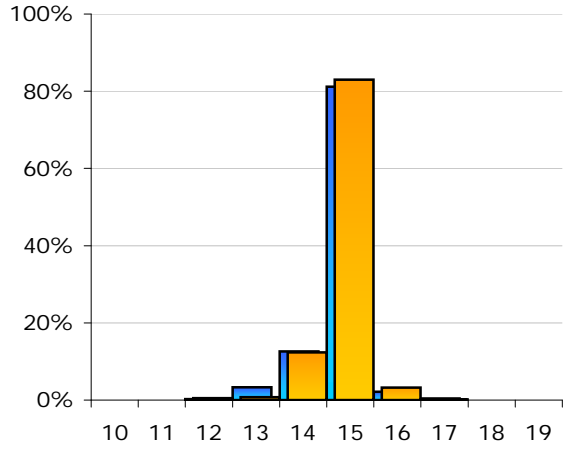
**YCA IIa**



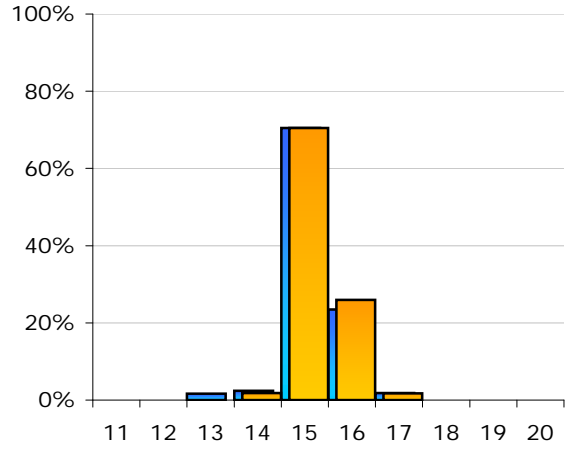
**YCA IIb**



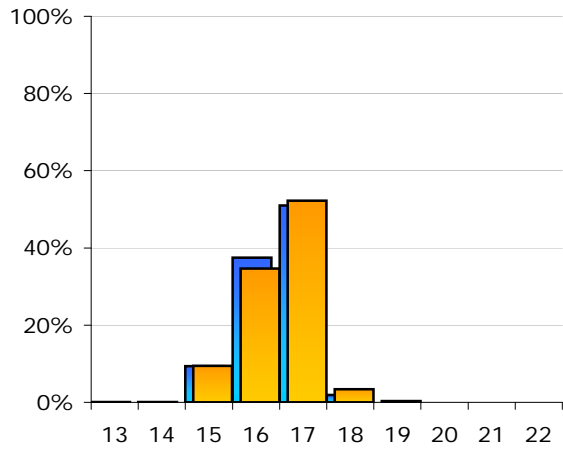
**DYS464a**



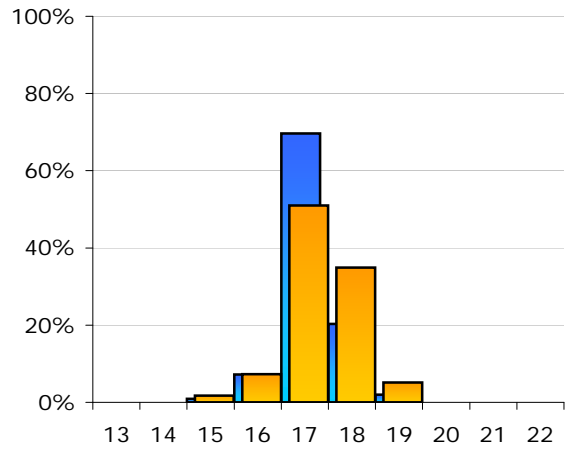
**DYS464b**



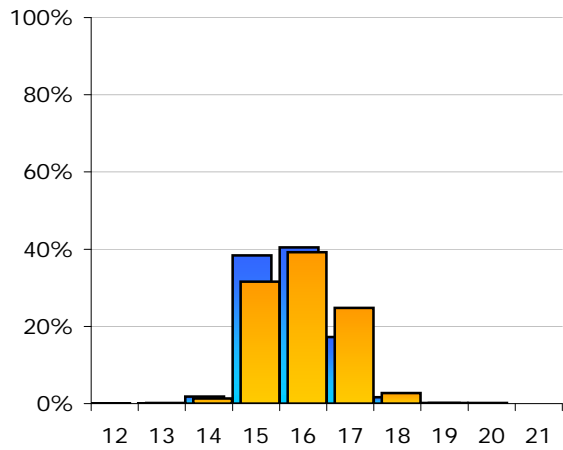
**DYS464c**



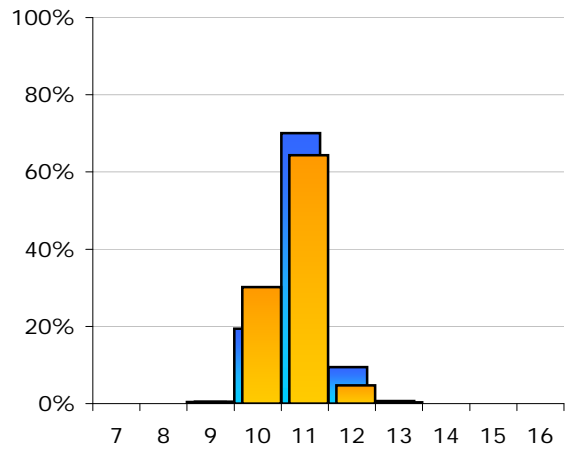
**DYS464d**



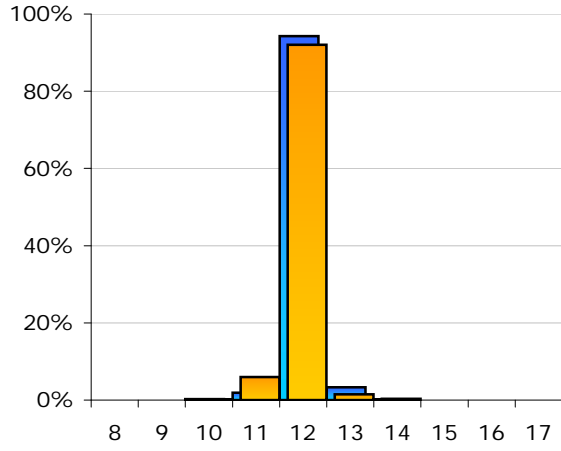
**DYS456**



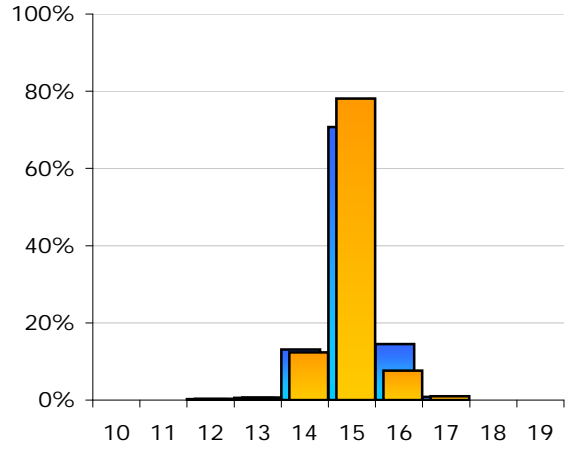
**GATA H4**



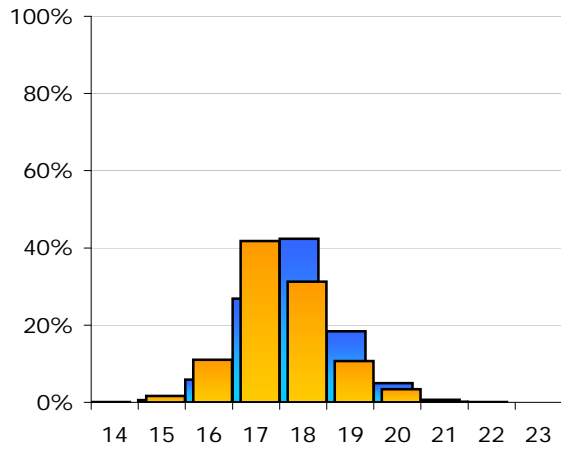
**DYS438**



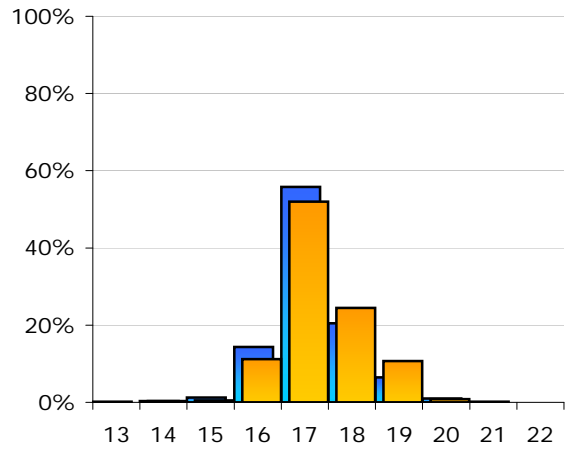
**DYS607**



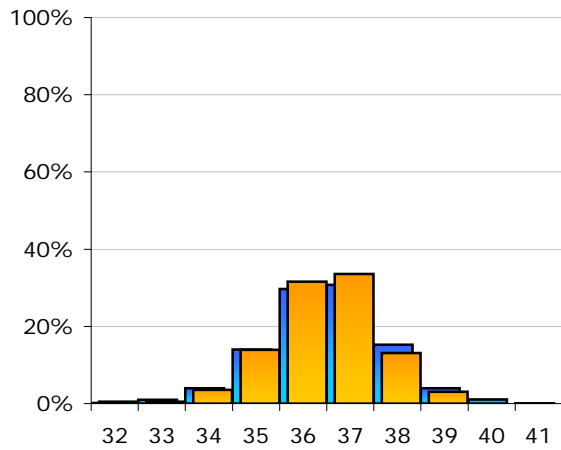
**DYS576**



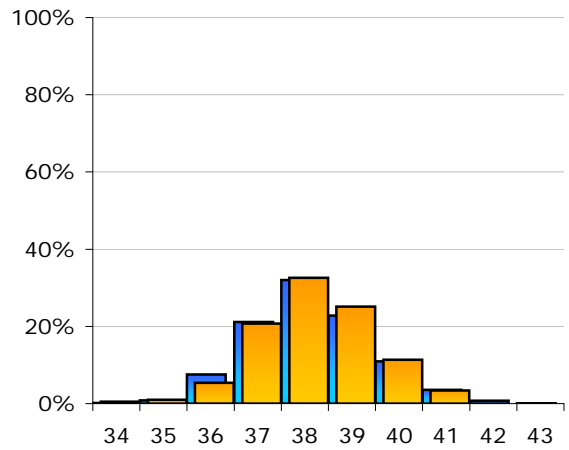
**DYS570**



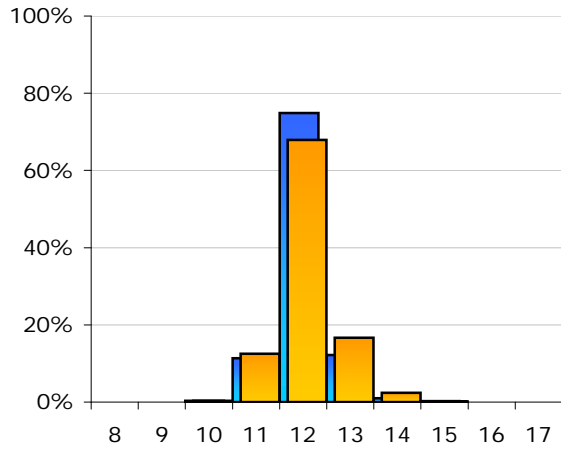
**CDY a**



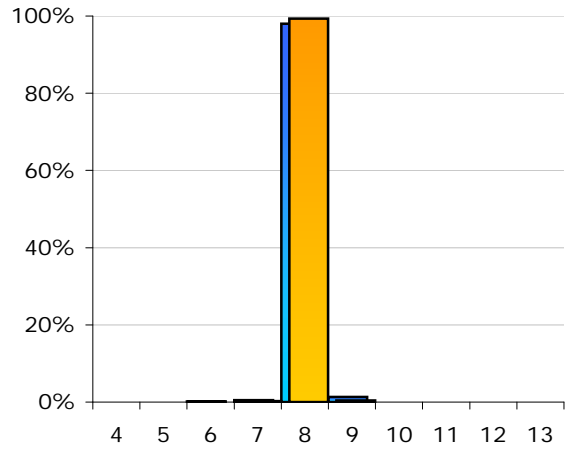
**CDY b**



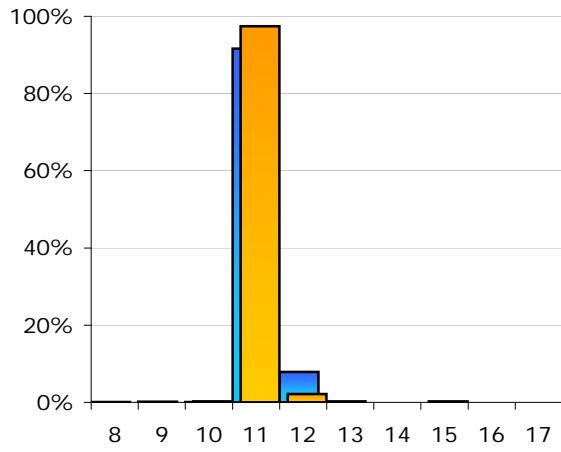
**DYS442**



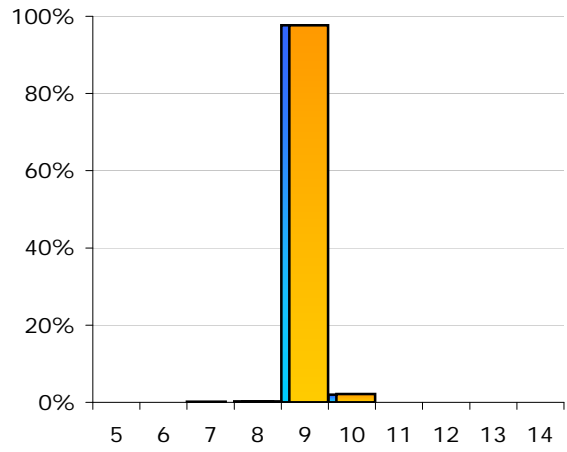
**DYS590**



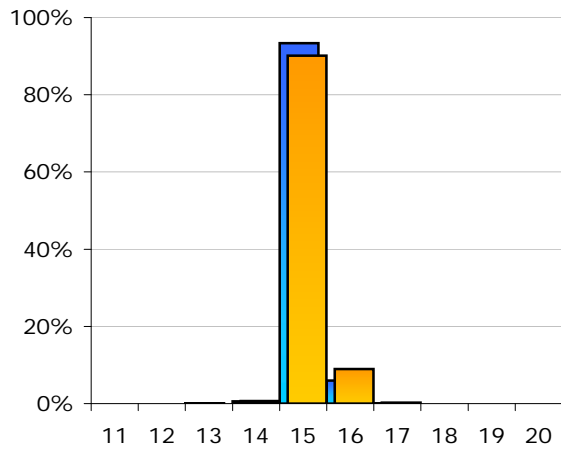
**DYS531**



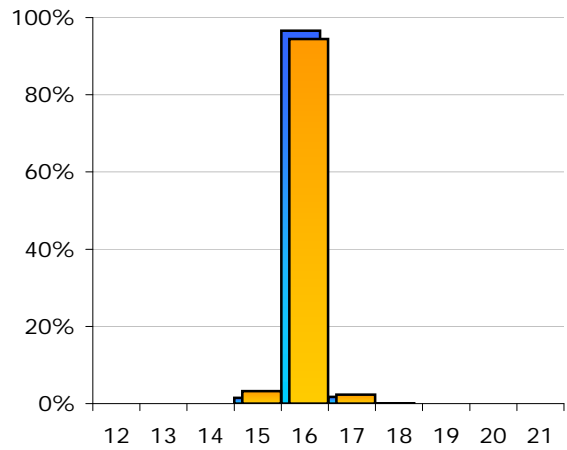
**DYS578**



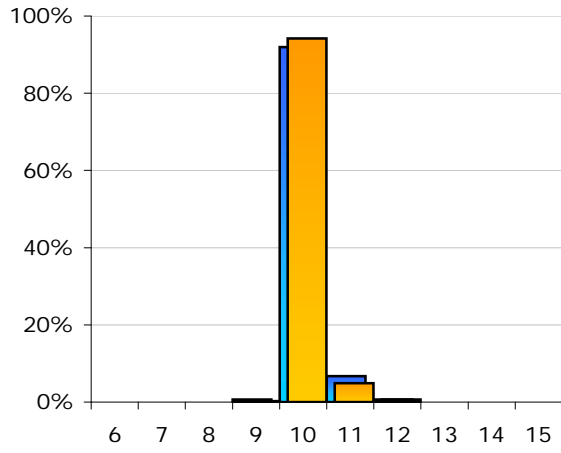
**DYS395S1a**



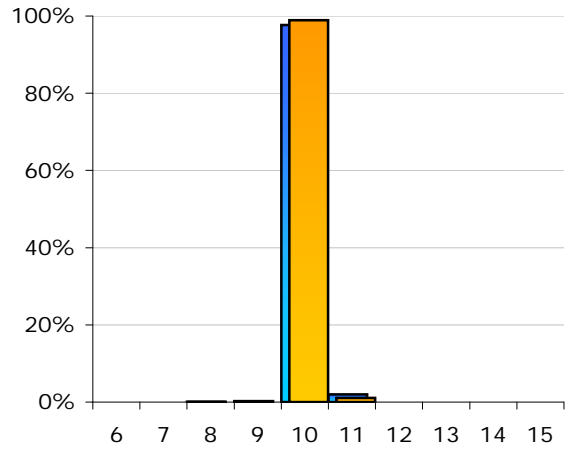
**DYS395S1b**



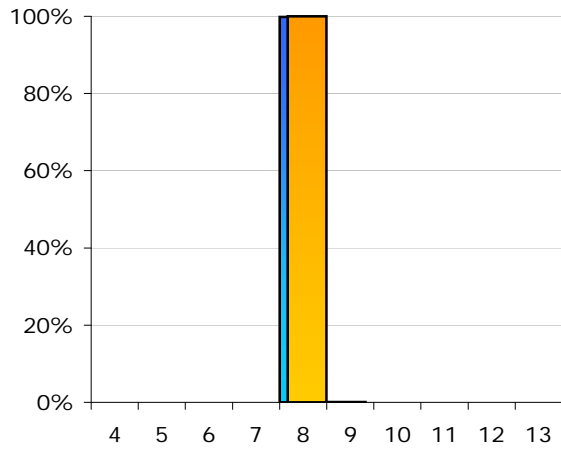
**DYS537**



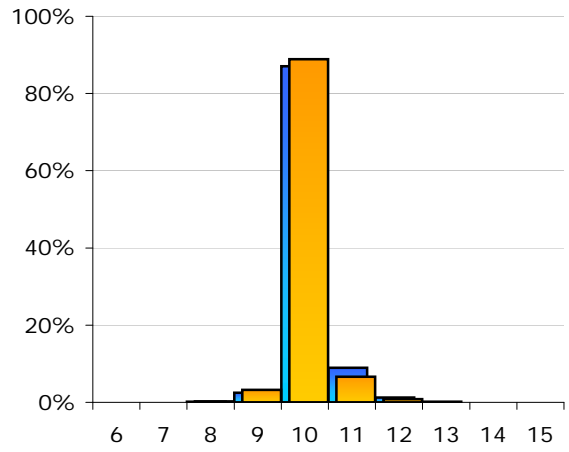
**DYS641**



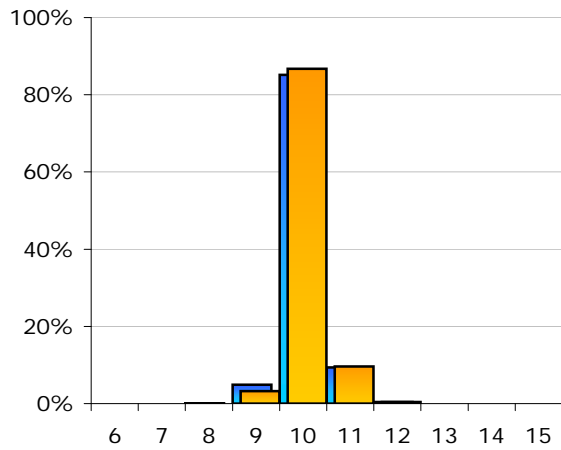
**DYS472**



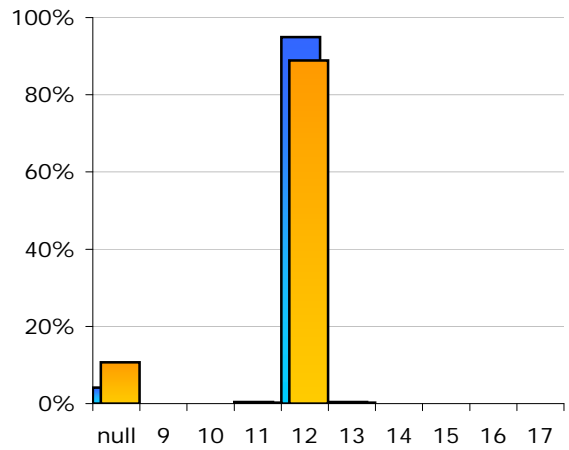
**DYS406S1**



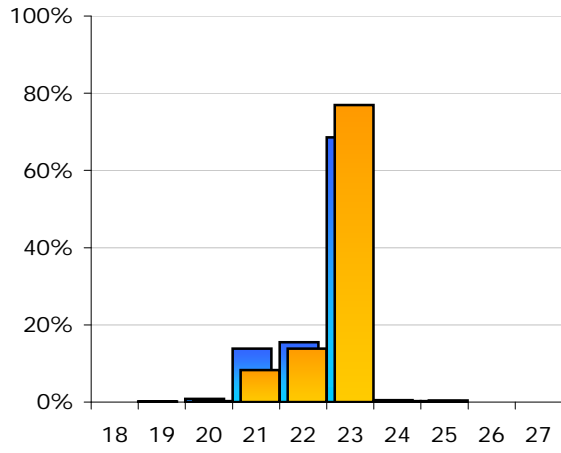
**DYS511**



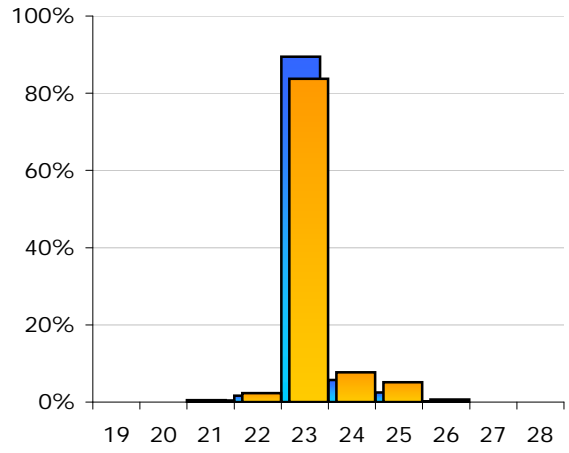
**DYS425**



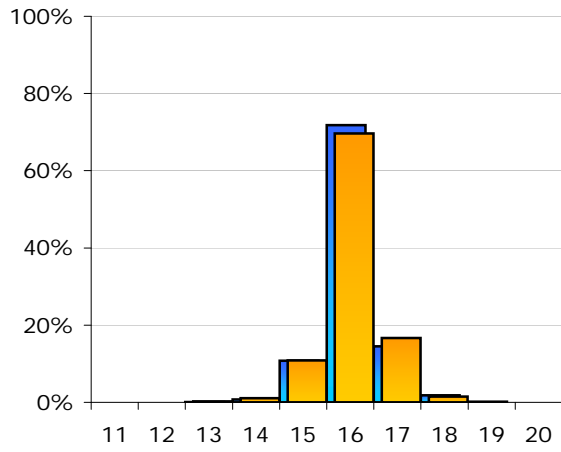
**DYS413a**



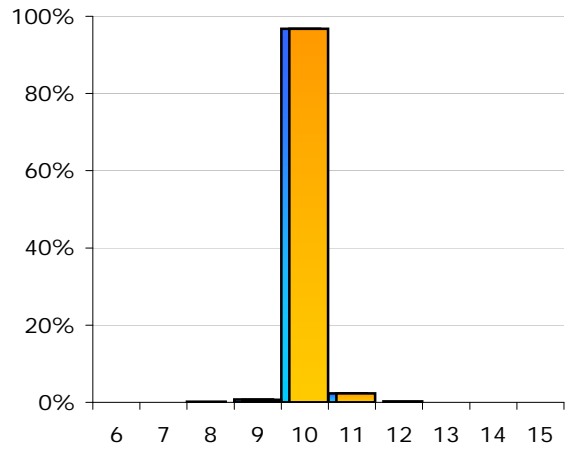
**DYS413b**



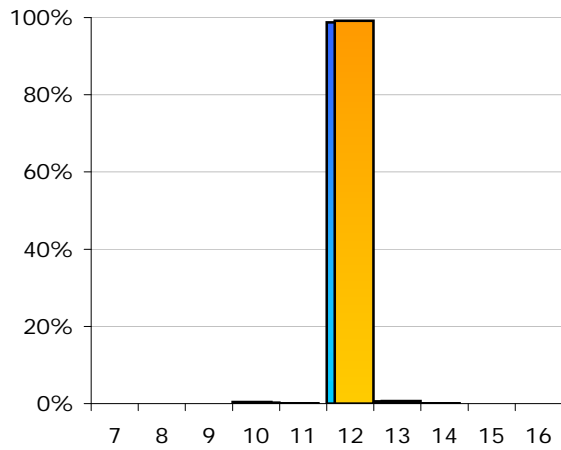
**DYS557**



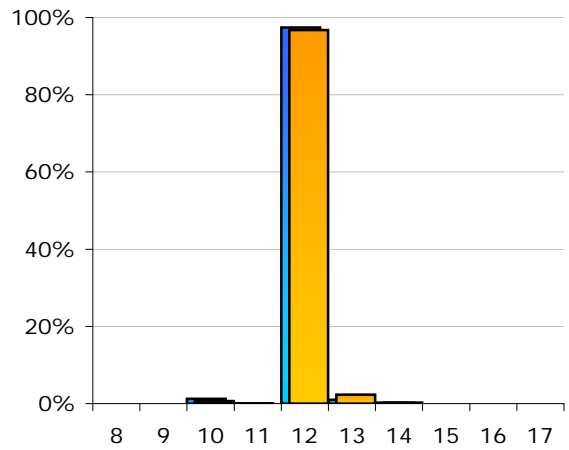
**DYS594**



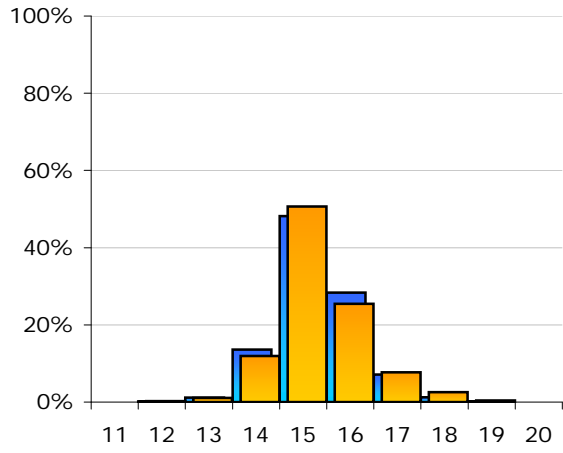
**DYS436**



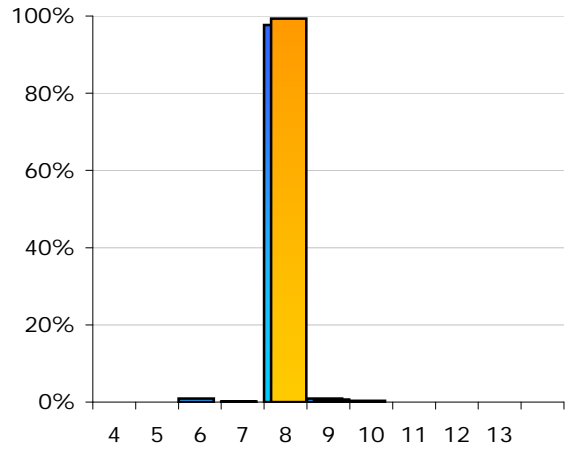
**DYS490**



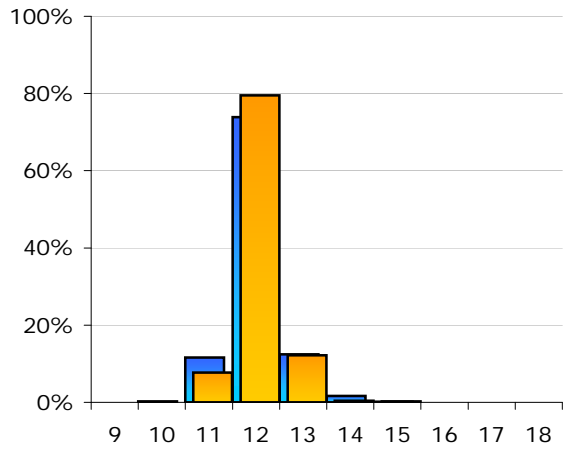
**DYS534**



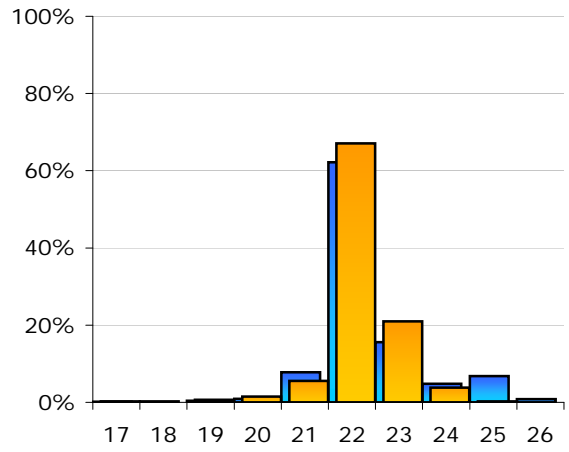
**DYS450**



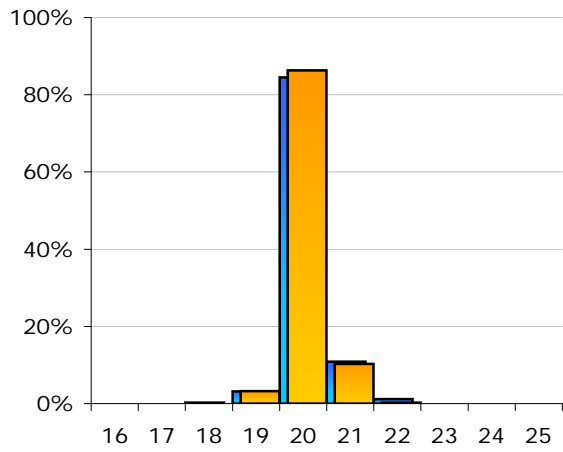
**DYS444**



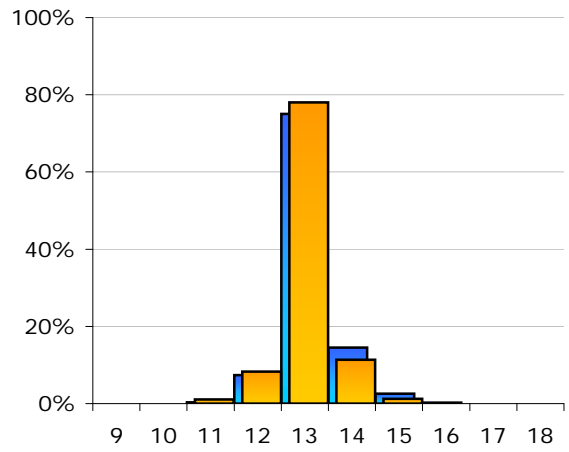
**DYS481**



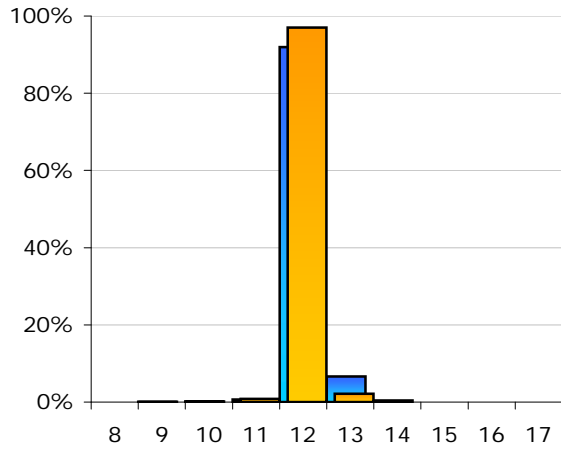
**DYS520**



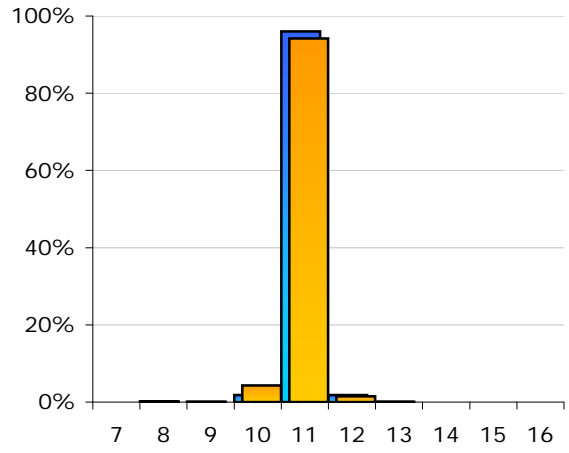
**DYS446**



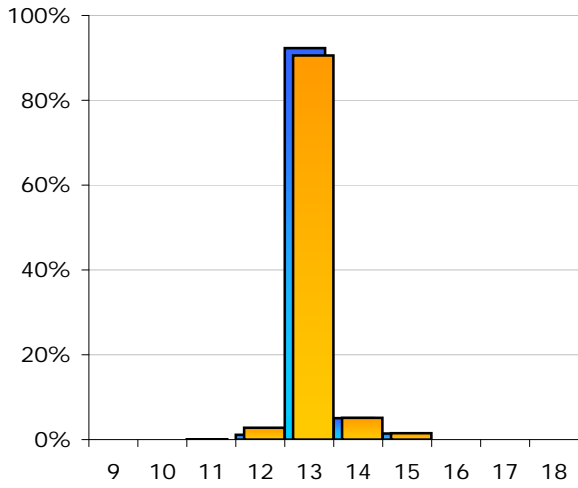
**DYS617**



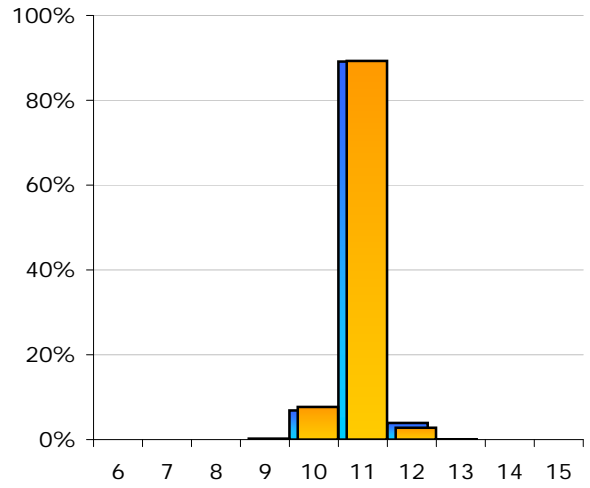
**DYS568**



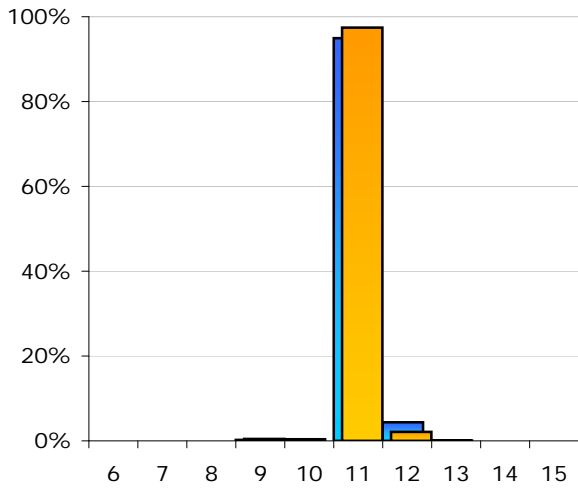
**DYS487**



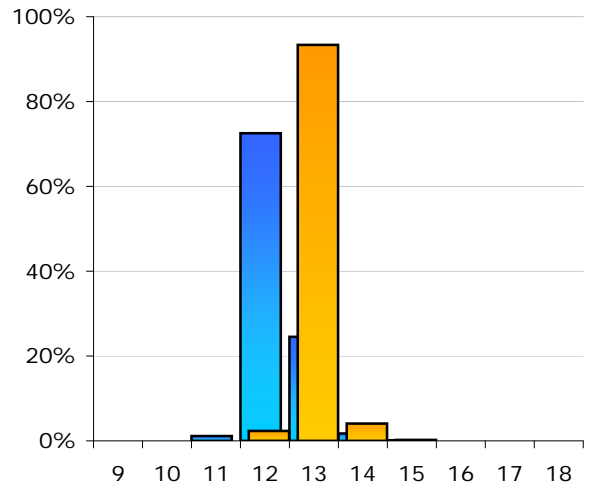
**DYS572**

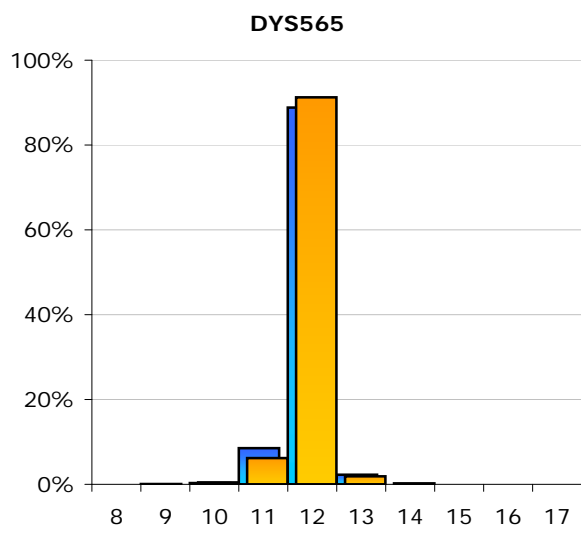


**DYS640**



**DYS492**





R-U106 (n = 714)

R-M269 (n = 3,144)

R-U106 and R-M269  
Allele Percentage Histograms

Created: 06 May 2009

By: Clinton Platt